

PrintedShirts.ca

A SPECIAL T SHIRT COMPANY

ATC THE AUTHENTIC T-SHIRT COMPANY

esactive®

Vintage Crewneck Sweatshirt



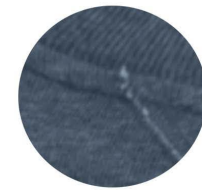
F2046

Product Features:

- 15.7-oz, 60/40 cotton/polyester fleece
- Combed and RING SPUN cotton

Adult sizes: XS-4XL

Icons/Fabric Features:



Available Colours and PMS Colours

Textile fabric colours are subject to dye lot variation and will not be exact match to print pantone reference



*80/20 cotton/polyester **85/12/3 cotton/polyester/viscose

464 HARGRAVE STREET · WINNIPEG, MANITOBA · R3A 0X5 · CANADA
info@PrintedShirts.ca · PHONE: (204) 944-9445 · TOLL FREE: 1-877-944-9445

SIZE CHART

ATC

Style F2046 - ESActive Vintage Crewneck Sweatshirt

Finished measurements in inches

SIZE	XS	S	M	L	XL	2XL	3XL	4XL
BODY WIDTH (HALF MEASURE)	19.5	21	22.5	24	25.5	27	29	31
BODY WIDTH (FULL MEASURE)	39	42	45	48	51	54	58	62
BODY LENGTH (HSP) FRONT	28.5	29	29.5	30	31	32	32.5	33
SLEEVE LENGTH (CB)	34.75	35.5	36.25	37	37.75	38.5	39	39.5

- **Body Length:** Length (HSP) is centre front length measured from highest point on the shoulders (HSP) to the bottom hem.
- **Chest:** With arms at sides, place tape measure under your arms and run it around the fullest part of the chest and across the shoulder blades.
- **Sleeve Length:** With arm bent and hand on hip, place tape measure at the base (Centre Back/CB) of your neck and follow along the top shoulder and to the sleeve end.

