



Featured Color: NAVY



HARRINGTON®

M265 HARRITON 5.6 OZ./YD2 EASY BLEND POLO

Fabric:

- 65% polyester, 35% cotton piqué
- Wrinkle-resistant
- Special poly/cotton blend creates soft silky hand and helps reduce shrinkage

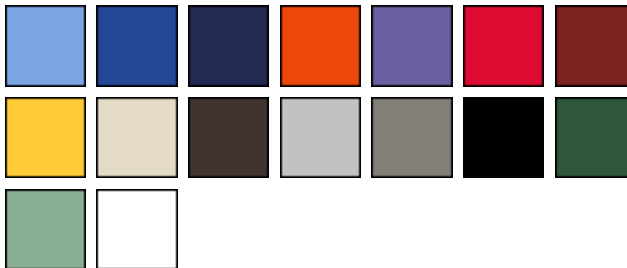
Features:

- Flat-knit collar and cuffs
- Hemmed bottom with side vents
- Three-button placket
- Set-in sleeves
- Side seamed

Sizes: XS-6XL

Starting Price: \$25.98

16 Available Colors



M265 HARRITON 5.6 OZ./YD2 EASY BLEND POLO

Product Specifications

	XS	S	M	L	XL	2XL	3XL	4XL	5XL	6XL
BODY LENGTH	28.5	29.5	30.5	31.5	32.5	33	34	35	36	36.5
BODY WIDTH	17	19	21	23	25	27	29	31	33	35
SLEEVE LENGTH	15.5	19.5	20.25	21	21.5	22	22.5	23	23.25	23.5

	XS	S	M	L	XL	2XL	3XL	4XL	5XL	6XL
CHEST	-	36-38	38-40	42-44	46-48	50-52	54-56	58-60	62-64	66-68

How to Measure

BODY LENGTH: Lay garment flat (face down). Measure from center back neckline seam straight down to bottom of the front hem.

BODY WIDTH: Lay garment flat. 1" below the armhole flat measure the garment across the chest.

SLEEVE LENGTH: Lay garment flat(face down). Measure from center back neck to outer edge of shoulder seam, then along outer edge to sleeve end.

CHEST: Measure just under the arms, across the fullest part of the chest, around shoulder blades, holding measuring tape firm and level